

Creating moments that matter

Sundance® Spas

2023 Series

Contents

Innovations	2
Our Promise to You	4
Sundance® Spas Global	6
Good Cause Spas®	8
Patented Fluidix® Jets	10
Fluidix® Jets by Series	14
Clean Water	16
Craftsmanship	18
SmartTub® System	20
980™ Series	22
880™ Series	28
780™ Series	34
680™ Series	36
Spa Specifications	38
Color Palette	46
Genuine Parts & Accessories	48

*Do more of what
matters to you*

At Sundance® Spas, we think you should do more of what matters to you. And with over 40 years of experience crafting high quality spas, we take pride in helping people spend time meaningfully. So go ahead and relax more. Let your mind wander. Savor each and every moment. Celebrate life. Start your #SundanceLife today. You deserve it.

Innovations

Year	Innovation Name	Description
1984	Electronic Controls	Simple backlit controls for easy spa operation
1986	SlipStream™ Filtration	Skims more buildup-producing debris than standard filtration systems
1988	Rigid Bond™ Shell	Three layers create a strong, scratch-resistant shell
1991	Accu-Ssage™ Seat	Customer-favorite seat delivers full-body immersive experience
1992	SunScents™ Aromatherapy	Added relaxation through a built-in aromatherapy dispensing system
2002	MicroClean® Filtration	Superior horizontal position removes the tiniest particles for clean*, clear water
2003	Patented Fluidix® Jets	Fluid dynamics principles make water and air feel exceptional
2005	Dynamic Flow™ Pump	Circulation pump filters and treats more water per minute for clean* water faster
2018	SmartTub® System	Making it easier than ever to use, monitor, and maintain your spa from your smart device
2020	CLEARRAY ACTIVE OXYGEN®	Uses the power of nature-inspired ozone+UV-C to work harder and clean your water longer



WATCH VIDEO



Revolutionizing the Spa Industry

*Clean is defined as the removal of microscopic (down to 3 micron level, varies by model) debris from the water. The CLEARRAY Active Oxygen® System utilizes various technologies to achieve cleanliness. One of them is ozone, which aids in the grouping of smaller debris to form larger clusters that can be more easily captured in the filtration process.

Our Promise to You

Connection

Our products provide an environment where you can nurture relationships and enhance your life, bringing social circles together and couples and families closer. By removing you from life's distractions, our spas give you exactly what you need to be your true self.

Loyalty

Built on trust and a commitment to excellence, the relationship we have with our customers will always be our foundation. By carefully selecting each of our dealers, we can ensure that you are enjoying outstanding products and services that reinforce the reputation we have earned over several decades.

Craftsmanship

We want you to relax when you're in your Sundance® spa. So we give you the confidence that your spa has everything you need and nothing you don't. Backed by personal experience, a solid reputation for reliability and the best dealer network, you can focus on distraction-free interactions with those that mean most to you.

*It's more than a spa,
it's a way of life*

"The quality, design and performance of the spa is exceptional. I look forward to using it almost everyday for relaxation and sleep enhancement, as well as the hydrotherapy benefits for a lower back injury."

- Ron R.

Sundance® Optima® 880™ Series Owner



"It is so far superior to the old spa we had which was part of our pool as it actually has jets you can control and there are four great seats to choose from."

- Norm E.

Sundance® Optima® 880™ Series Owner



Once you experience it, you'll see why owners buy again and again: life is better with a Sundance® spa.

Start your own #SundanceLife and join in the conversation.



Sundance® Spas Global

Sundance® Spas can be found in more than 750 retail locations in 75 countries worldwide.

Algeria	Iceland	Poland
Australia	India	Portugal
Austria	Indonesia	Romania
Belarus	Ireland	Russia
Belgium	Israel	Singapore
Bosnia/Herzegovina	Italy	Slovakia
Bulgaria	Japan	Slovenia
Canada	Kenya	Spain
Canary Islands	Latvia	South Korea
China	Liechtenstein	Sri Lanka
Costa Rica	Lithuania	St. Vincent
Croatia	Luxembourg	Sweden
Cyprus	Malaysia	Switzerland
Czech Republic	Maldives	Taiwan
Denmark	Malta	Thailand
Egypt	Mexico	Turkey
Estonia	Montenegro	Ukraine
Finland	Morocco	United Kingdom
France	Netherlands	United States
French Polynesia	Netherlands Antilles	Uruguay
Germany	New Zealand	Vietnam
Greece	Nigeria	Virgin Islands
The Grenadines	Norway	
Hong Kong	Panama	
Hungary	Philippines	



Good Cause Spas®

Whether helping generations of families come together or giving back to those who give so much, supporting good causes in our communities simply feels like the perfect fit.

Please join Sundance® Spas and the Good Cause Spas® movement in our support of the many worthy organizations that strive to help our neighbors, heroes, and champions.



Total amount donated to worthy causes since 2016:

\$114,200



Number of spas donated since December 2016:

77

Learn how Sundance® Spas supports good causes in the community by visiting:
www.GoodCauseSpas.com



**WISH
FOR OUR
HEROES**



Sundance® Spas donates a spa to WISH for OUR HEROES for every 100 Sundance® spas sold at each participating dealer location in a single calendar year. Please join us in celebrating the dealers that helped contribute to this worthy cause.

- | | |
|---|--|
| A-1 Pools | Inside Out Home Recreation |
| All Seasons Pools and Spas | LeDipping Parlor Spas |
| All Seasons Spas | New England Spas |
| Allstate Home Leisure | Omaha Hot Tub Company |
| Aqua Paradise | Pacific Spas & Sauna |
| Aquaquip | Performance Pool & Spa |
| Arctic Home Living | Pool City |
| Atlanta Hot Tub Center | Red Rock Spas |
| Backyards in Style | Rejuvenate Pools & Spas |
| Backyards of America | Royal Pools & Spas |
| Carefree Spas of Indianapolis | Spa Palace |
| Desert Oasis Spas & Pools | Sundance Spas of NH |
| Emerald Swimming Pools of Oregon | Sundance Spas of Twin Ports |
| Great Bay Spa & Sauna | Superior Hearth & Home |
| Hydro-Spa Factory Outlet | Take A Break Spas & Billiards |
| Imagine Backyard Living | The Great Escape |
| | The Spa & Sauna Co. |

Patented Fluidix® Jets

As you surrender to the warm, bubbly water of a Sundance® spa, you'll be whisked away by the right blend of heat, buoyancy, and massage that will change the way you feel.



Fluid Dynamics Principles

Patented Fluidix® jets were co-developed with Bowles Fluidics Corp, experts in the movement of liquids and gases.

That's why a massage in a Sundance® spa feels different than anything you've experienced before. Delivering power, motion, and massage, you'll be whisked away by the customized experience that's perfect for you.

Fluidix® jets operate without bearings that can clog or parts that wear out, combining air and water to create highly refined massage sensations. Each jet is positioned to reach pressure points used in reflexology and acupressure so stress and strain can be a distant memory.

*Power,
Motion,
Massage.*

*available in select models

Patented Fluidix® Jets

Adjust the position of the Fluidix® jet to change the air flow from a wave-like oscillation to a focused stream of water.



Surrender to the Perfect Massage

Even if you don't know the difference between Swedish massage and Shiatsu, you'll be enchanted by the variety of massage combinations Sundance® spas deliver. Every Fluidix® jet is assigned a distinct role, uniquely designed to simulate a specific massage action. Air-only jet streams feel like delicate fingers massaging soft tissues. Other jets act more like strong hands deeply kneading large muscles. Some even mimic the rapid, stimulating techniques of Eastern massage therapies.

Regardless of which Fluidix® jet combination you call your favorite, you can get a personal massage from your Sundance® spa.

Fluidix® Jets by Series

Deep Tissue



WHIRLPOOL JET
Adjustable, vigorous, deep muscle-penetrating massage known for its boldness.



FLUIDIX INTELLI-JET™
Adjustable water flow and oscillating direction for a custom deep tissue massage.



VORTEX JET™
Adjustable rifling action delivers swirling sensation for high and low impact therapeutic massage.



FLUIDIX® ST™ JET
Focused, deep-tissue jet stream adjustable for intensity and pressure.



ACCU-PRESSURE™ JET
Deep-tissue massage to relieve muscle tension and joint pain.



FOCUS RELIEF® JET
Soothing bubbles for either a concentrated deep tissue massage or soft tissue effervescent effect.



PULSATOR™ JET
Pulsing massage action to reduce discomfort of carpal tunnel syndrome in wrists.

Muscle Release



FLUIDIX® REFLEX™ JET
Adjustable, back and forth Swedish-style massage motion to increase circulation and relax your body.



FLUIDIX® NEX™ JET
Adjustable to relieve neck tension and strain in small muscles and sensitive nerves.

Relaxation



SILENT AIR® INJECTOR JET
Injects a small, gentle stream of bubbles in the water that also diffuse the SunScents™ fragrance aromatherapy system.



880™ & 980™ series
Maximum Massage Coverage

780™ series
Comprehensive Massage Experience



VORTEX JET™
Adjustable rifling action delivers swirling sensation for high and low impact therapeutic massage.



MINI VORTEX JET™
Utilizes high-impact and low-impact targeted stream of water with unique rifling action adjustable for optimal massage.



ADJUSTABLE ACCU-PRESSURE™ JET
Adjustable deep tissue jet offers more control over your therapeutic experience.



SMT™ FLUIDIX® JET
Medium, spiral-action massage to ease tension-prone areas in small muscle groups and joints.



SMT™ MICRO JET
Small, targeted massage to ease neck tension.



ACCU-PRESSURE™ JET
Deep-tissue massage to relieve muscle tension and joint pain.



The Art of Relaxation



Deep Tissue

STRESS-RELIEF

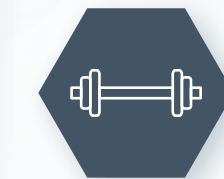
Everyday stress can create muscle tension and restrict blood flow, causing headaches, sleeplessness, fatigue and soreness. Hydrotherapy is an effective solution to free your stress.



Pressure Point

RENEWAL

By getting a break from the pace of our lives and submersing in an emotional sanctuary, you can relax, rejuvenate and rehabilitate your body, mind, and soul.



Muscle Release

HEALING

Sundance® Spas continues the tradition of using the restoring properties of water and massage to provide relief and rejuvenation to repair muscles faster.



Relaxation

CHROMATHERAPY

Light has a profound effect on our moods and peace of mind. Chromotherapy, also known as color therapy, uses individual colors in the spectrum to boost and balance energy in your body.



Relaxation

AROMATHERAPY

Without lessening water quality, Sundance® SunScents™ are injected into bubbles and then released when they come to the surface, leaving you feeling renewed.

Clean Water

Combines ozone and UV-C technology in a manner compatible with traditional chlorine** or bromine sanitizers, to provide a hands-free approach to water care.

Step 1: Filtration Systems



Dynamic Flow™ circulation pump

This leading energy-efficient high volume pump filters and treats more water per minute through the system than a low volume pump for cleaner water faster.



SlipStream™ weir gate

Extra wide weir gate floats with the water level to skim more build up-producing debris than standard filtration systems. Compatible with SunPurity™ Minerals.



Proprietary horizontal filter

Unlike traditional filtration systems, the horizontal position of the pleated filter allows water to flow through the entire filter to remove the tiniest particles in the water for cleanest, clearest water.

Filtration System by Series



MicroClean® Ultra Filtration System

980™ series 880™ series

MicroClean® Ultra Filtration System with horizontal MicroClean® Ultra filter, SlipStream™ weir with SunPurity™ mineral cartridge fitting, Dynamic Flow™ circulation pump and CLEARARRAY® UV-C Technology.



MicroClean® Filtration System

780™ series

MicroClean® Filtration System with horizontal MicroClean® filter, SlipStream™ weir with SunPurity™ mineral cartridge fitting, Dynamic Flow™ circulation pump and CLEARARRAY® UV-C Technology.



MicroClean® Mini Filtration System

680™ series

MicroClean® Mini Filtration System with horizontal 75 square foot filter with spun core and proprietary water skimmer.



CLEARARRAY ACTIVE OXYGEN®

The CLEARARRAY Active Oxygen® System*** injects a low dose of ozone into the water before it passes by the UV-C light, energizing active oxygen molecules to work harder to clean* the water longer. This advanced oxidation process naturally activates active oxygen molecules to help clean* the water. The CLEARARRAY Active Oxygen® Clean Water System is standard on 980™, 880™, and 780™ Series spas.

Step 2: Water Care Technology

How it Works

- Hot tub water is injected with a low dose of ozone and mixed thoroughly. Ozonated water is then exposed to a UV-C bulb to energize the molecules. When ozonated water is treated by the UV-C rays, active oxygen is unlocked to clean* your water
- The water is then pumped back into the hot tub where it continues to polish the water, allowing debris to be easily removed through the filters.

Ozone + UV-C Light = Better Together

Proprietary Automatic Oxidizer

Ozone systems have been used for many years in hot tubs as well as traditional water treatment facilities. By limiting the levels of ozone generated, and maximizing its effectiveness by exposing it to UV-C light, it is converted to active oxygen to give you more cleaning* power without increasing the wear and tear on equipment and covers that traditional ozone systems are known for.

Nature-inspired UV-C Light

UV-C Light is a natural part of the spectrum of electromagnetic energy generated by the sun. Working together, Ozone and UV-C Light enhance the performance of this clean* water system.

Step 3: Water Balancers



Water Balancers

Sundance® Spas, the trusted leader in spa technology, offers a complete line of genuine water care products that are backed by the quality, innovation and service that you expect from our brand.



SunPurity™ PLUS

A very effective water enhancer that helps provide a full system cleanse.

*Clean is defined as the removal of microscopic (down to 3 micron level, varies by model) debris from the water. The CLEARARRAY Active Oxygen® System utilizes various technologies to achieve cleanliness. One of them is ozone, which aids in the grouping of smaller debris to form larger clusters that can be more easily captured in the filtration process. **Use of chlorine tablets (trichlor) may damage components within your hot tub. Do not use. The compatibility of ozone and UV-C technology means only that these technologies do not impair the functionality of chlorine or bromine. ***Not standard on all models.

Craftsmanship

Every element* is designed specifically for your Sundance® spa for quality and reliability that's built in.

SunStrong® Cover

A properly-fitting cover protects your spa from debris and heat loss.

Fully Insulated

Protects against air, moisture and sound and reduces energy required to run the spa.

Efficient Heater

Heating element transfers heat to the water, increasing thermal efficiency and resisting corrosion.

Rigid Bond™ Shell

Proprietary shell manufacturing process makes acrylic stronger and increases thermal retention properties.

Tool-free Access

Easily access the drain and critical components in your spa without tools, saving time and making maintenance trouble-free.

SunStrong® and SunSide® Cabinets

High quality, UV-resistant synthetic cabinetry is durable and low maintenance.

Synthetic Base

Provides a solid foundation impervious to nature, moisture and the elements.

Additional Features

- SmartTub® System
- CLEARRAY Active Oxygen® System
- Indicator Light
- Quick Drain Feature
- Intelligent Controls

Built with you in mind™

Simplified Spa Ownership at Your Fingertips

The exclusive SmartTub® System is engineered to make it easier than ever to use and maintain your Sundance® spa. From your smart device, whether on the road or in the comfort of home, you can compare, monitor, and control your spa to harmonize with your life.*



- 🟢 : Working Properly
- 🟡 : Reminder
- 🔴 : Needs Attention



- ### Convenience from an App
- Get real-time notifications and reminders
 - Track energy usage reports
 - Pair with Siri, Alexa, Google Assistant and wearables
 - Enjoy new features updated automatically



- ### Full Control from Anywhere
- Adjust the temperature, jets, and lights
 - Lock down your hot tub and prevent usage
 - Set up an automated usage schedule



- ### Peace of Mind When Home or Away
- Automatically alerts your dealer if your hot tub needs attention
 - Detect power outages, freezing, and overheating
 - Optimize energy savings with industry-first Smart Heat Mode, which learns your usage and lets you control how much energy you use



SmartTub® system uses cellular-based communication and requires cell service from our provider partner in your area. See website for details.
*Requires subscription beginning in second year of ownership.

980™ Series

PREMIUM FEATURES

- Up to 10 jet varieties
- Patented Fluidix® Jets
- Stainless steel jet trim
- Specialty Silent Air® injector jets
- MicroClean® Ultra filtration system
- Premium accents
- Integrated interior lighting
- Accent lighting
- Tool-free cabinetry
- SunCooler™ cold storage
- Wide sheet waterfall
- i-Touch control
- Quick Drain
- Synthetic base
- Dynamic Flow™ circulation pump
- SmartTub® system
- SunStrong® Extreme cover

Changing the way
you enjoy your spa

980™ Series

Founded upon consumer-favorite Sundance® spa features and laced with never-before-seen design and style, the 980™ Series will change the way you enjoy your spa.



Kingston™



Claremont®



DESIGN

- Geometric exterior cabinetry highlighted by architectural corner lighting
- Lounge deck with SunCooler™ cold storage areas
- Low profile for easy entry and exit for soakers of any age

EXPERIENCE

- Spacious seats highlighted by LED lighting
- Patented Fluidix® jets and up to 10 massage varieties
- Upgraded Accu-Ssage™ therapy seat
- Specialty Silent Air® injector jets

WATER CARE

- MicroClean® Ultra Filtration System
- Slipstream™ skimmer
- CLEARRAY Active Oxygen® System
- CLEARRAY® On-Demand

FEATURES

- Glass i-Touch control for easy use day or night
- Tool-free cabinetry removal
- Robust synthetic base
- SunStrong® Extreme cover
- SmartTub® system
- SunScents™ aromatherapy (scents sold separately)

UPGRADES

- Integrated BLUEWAVE® stereo (optional)
- Winter Wrap insulation (optional)

980™ Series



Interior Lighting



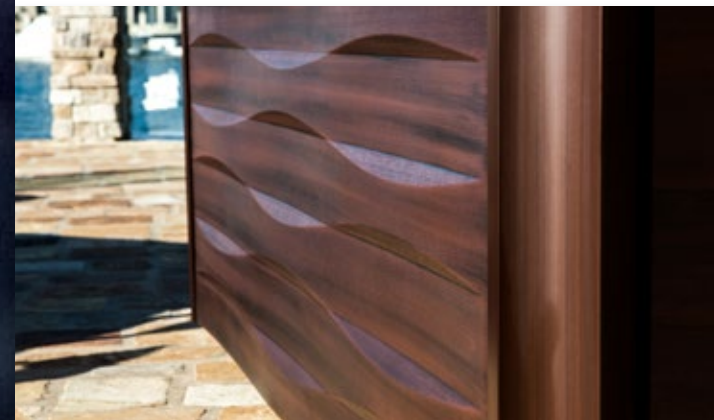
Spacious seats are highlighted by the even glow of LED lighting for beauty and safety



Advanced Control



Glass i-Touch Control with smart device functionality makes it even easier to use and enjoy your spa day or night



Geometric Cabinetry



Crisp, rhythmic texture of the exterior cabinetry highlighted by corner lighting combines classic beauty and modern form



Additional Seating and Convenience



A low profile, flat top rail and lounge deck offer more places to sit and socialize. SunCooler™ cold storage areas, integrated into the lounge deck, feature removable lid for easy fill, pump-assisted drain and an internal light for use day or night

880™ Series

PREMIUM FEATURES

- Up to 10 jet varieties
- Patented Fluidix® Jets
- Stainless steel jet trim
- Specialty Silent Air® injector jets
- MicroClean® Ultra filtration system
- Premium accents
- Integrated interior lighting
- SunSide® cabinetry
- Accent lighting
- Tool-free cabinetry
- Wide sheet waterfall
- Touch control
- Synthetic base
- Dynamic Flow™ circulation pump
- SmartTub® system-compatible

Thoughtful design and features
you can't live without

880™ Series

See why Sundance® spa owners buy again and again. We are continuously innovating, giving the 880™ Series thoughtful design and features you can't live without.



Aspen®



Maxxus™



Optima®



Cameo®



Marin®



Altamar®



Capri®



EXPERIENCE

- Patented Fluidix® jets and up to 10 massage varieties
- Accu-Ssage™ therapy seat
- Specialty Silent Air® injector jets

WATER CARE

- MicroClean® Ultra Filtration System
- Slipstream™ skimmer
- CLEARARRAY Active Oxygen® System
- CLEARARRAY® On-Demand
- Silent Spa® filtration

FEATURES

- i-Touch control with color screen
- Integrated LED lighting with external indicator light
- Premium metallic, illuminated accents
- Dual-purpose beverage concierge filter lid
- SunSide® Cabinetry
- Exterior lighting
- Tool-free cabinetry for easy equipment access
- Synthetic base
- Illuminated grab bars
- Quick Drain
- SunScents™ aromatherapy (scents sold separately)

UPGRADES

- Integrated BLUEWAVE® stereo (optional)
- SmartTub® system (optional)
- FlexFill™ Plus insulation (optional)
- SunStrong® Extreme Cover (optional)

880™ Series



MicroClean® Ultra Filtration System



MicroClean® Ultra Filtration System sets the standard for robust, efficient water filtration



i-Touch Control Panel



Spas often get the most use at night, so an advanced control amplifies ease of use. With a glowing, color, touch screen control and icon-driven menus programming your spa is even easier any time of day



Accu-Ssage™ Therapy Seat

Complete with arm rests, this customer favorite seat delivers relaxation to your neck, back, hips, calves, and wrists in our deepest, full-body immersion experience



Silent Air® Injector Jets



An exclusive blower and air-only jets deliver a soft tissue massage and optional SunScents™ aromatherapy for a soothing experience

780™ Series

Create your perfect backyard retreat

We believe the 780™ Series should enhance your life, so we combined new technologies with good old fashioned know-how to craft intuitive, well-rounded spas that are a delight to use.

EXPERIENCE

- Patented Fluidix® jets and up to 6 jet varieties
- SMT™ therapy seat
- Accu-Pressure™ therapy seat

WATER CARE

- MicroClean® Filtration System
- Slipstream™ skimmer
- CLEARARRAY Active Oxygen® System
- CLEARARRAY® On-Demand

FEATURES

- Streamlined digital control panel with illumination
- Enhanced LED lighting with external indicator light
- Tool-free cabinetry
- Synthetic base

UPGRADES

- BLUEWAVE® stereo (optional)
- SmartTub® system (optional)
- FlexFill™ Plus insulation (optional)
- SunStrong® Extreme Cover (optional)



Chelsee®



Hamilton™



Montclair™



Bristol™



Dover™

ENHANCED FEATURES

- Up to 6 jet varieties
- Patented Fluidix® Jets
- Stainless steel jet trim
- MicroClean® filtration system
- Stylized design touches
- Enhanced lighting
- Tool-free cabinetry
- Synthetic base
- Dynamic Flow™ circulation pump
- SmartTub® system-compatible



MicroClean® Filtration System



MicroClean® Filtration System makes it easy to keep your water clean and fresh



Streamlined Digital Control Panel

Illuminated control panel makes it easier to program your spa and puts CLEARARRAY® On-Demand right at your fingertips

680™ Series

Take that "spa feeling" with you wherever you go
The 680™ Series will make you feel good long after you leave the water.

FEATURES

- Proprietary Jets
- Adjustable massage options
- MicroClean® Mini Filtration System
- CLEARARRAY® UV-C Technology
- Simplified control panel
- Tool-free cabinetry
- Exterior lighting

WATER CARE

- MicroClean® Mini Filtration System
- Slipstream™ skimmer

UPGRADES

- SunStrong® Extreme Cover (optional)
- SmartTub® system (optional)



McKinley®



Ramona®



Edison®



Peyton™



Prado®



Alicia™

TRADITIONAL FEATURES

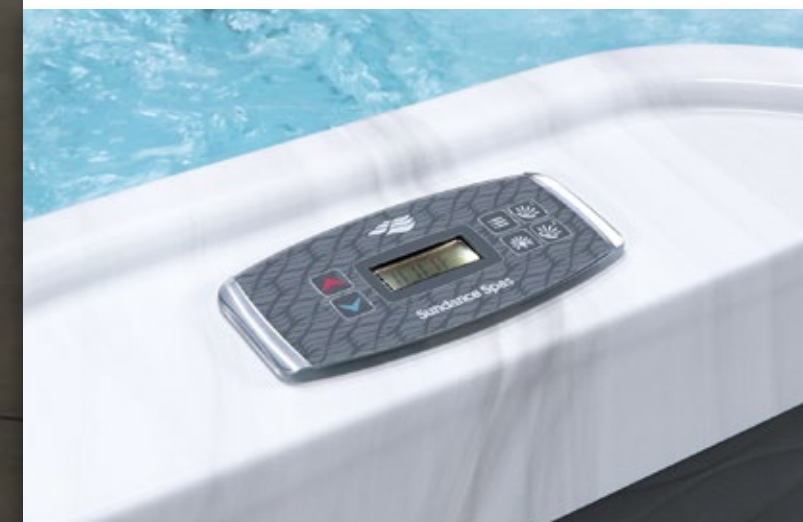
- Proprietary Jets
- Stainless steel jet trim
- MicroClean® Mini filtration
- Classic lighting
- SmartTub® system compatible
- Exterior lighting
- Tool-free cabinetry
- Slipstream™ skimmer



MicroClean® Mini Filtration System



Horizontal 75 square foot filter with spun core and proprietary water skimmer.



Simplified Control Panel

Streamlines spa functions to make it easy to focus on relaxation

*Spa colors, options, and features vary. See dealer for details.

980™ Series



980™ Series



Kingston™

Seats 6-7

7'8" x 8'4" x 34" (234 cm x 254 cm x 86 cm)



SunCooler™



i-Touch Glass Control



Exterior Lighting



SmartTub® System

980™
series



DRY WEIGHT	1,048 lbs (475 kg)
TOTAL FILLED WEIGHT	5,310 lbs (2,409 kg)
AVERAGE SPA VOLUME	401 US gal (1,518 liters)
JET PUMPS	
NORTH AMERICA (60 Hz)	3x TheraMax™ 1-Speed 2.5 hp Continuous
EXPORT (50 Hz)	3x TheraMax™ 1-Speed 2.0 hp Continuous
TOTAL JETS	57 + 12 Air Injector Jets
AIR BLOWER	1.5 hp air pump
MASSAGE VARIETY	8

WATER SYSTEM	MicroClean® Ultra Filtration System
LIGHTING	Seat accent lights, waterfall, SunCooler™, exterior and underwater
ELECTRICAL REQUIREMENTS*	
NORTH AMERICA (60 Hz)	240 VAC @ 50A or 60A
EXPORT (50 Hz)	230 VAC @ 24A, 26A
TITANIUM COIL HEATER	5.5 kW ¹

	Estimated Monthly Cost	w/ Winter Package
	\$15.98	\$15.19



Claremont®

Seats 5-6

7'8" x 8'4" x 34" (234 cm x 254 cm x 86 cm)



SunCooler™



i-Touch Glass Control



Exterior Lighting



SmartTub® System

980™
series



DRY WEIGHT	1,045 lbs (474 kg)
TOTAL FILLED WEIGHT	5,348 lbs (2,426 kg)
AVERAGE SPA VOLUME	405 US gal (1,533 liters)
JET PUMPS	
NORTH AMERICA (60 Hz)	3x TheraMax™ 1-Speed 2.5 hp Continuous
EXPORT (50 Hz)	3x TheraMax™ 1-Speed 2.0 hp Continuous
TOTAL JETS	59 + 6 Air Injector Jets
AIR BLOWER	1.5 hp air pump
MASSAGE VARIETY	10

WATER SYSTEM	MicroClean® Ultra Water Management
LIGHTING	Seat accent lights, waterfall, SunCooler™, exterior and underwater
ELECTRICAL REQUIREMENTS*	
NORTH AMERICA (60 Hz)	240 VAC @ 50A or 60A
EXPORT (50 Hz)	230 VAC @ 24A, 26A
TITANIUM COIL HEATER	5.5 kW ¹

	Estimated Monthly Cost	w/ Winter Package
	\$14.90	\$13.82

¹2.7 KW on 50 Hz export spas.
*See manual for more configurations

¹2.7 KW on 50 Hz export spas.
*See manual for more configurations

Seats 6+

Seats 6+



Aspen® Seats 7-8

77" x 92" x 41.5" (231 cm x 280 cm x 106 cm)

880™ series

DRY WEIGHT	1,154 lbs (523 kg)
TOTAL FILLED WEIGHT	6,784 lbs (3,077 kg)
AVERAGE SPA VOLUME	520 US gal (1,968 liters)
JET PUMPS	
NORTH AMERICA (60 Hz)	3 TheraMax™ 2.5 hp (5.1 bhp ²)
EXPORT (50 Hz)	3 TheraMax™ 2.0 hp (2.6 bhp ²)
TOTAL JETS	66 + 14 Air Injector Jets
AIR BLOWER	1.5 hp air pump
MASSAGE VARIETY	8

WATER SYSTEM	MicroClean® Ultra Filtration System
LIGHTING	Integrated
ELECTRICAL REQUIREMENTS*	
NORTH AMERICA (60 Hz)	240 VAC @ 50A or 60A
EXPORT (50 Hz)	230 VAC @ 24A, 26A
TITANIUM COIL HEATER	5.5 kW

Estimated Monthly Cost **\$19.22** w/ EcoWrap® **\$13.68**



Maxxus™ LOUNGE Seats 6

77" x 92" x 41.5" (231 cm x 280 cm x 106 cm)

880™ series

DRY WEIGHT	1,143 lbs (518 kg)
TOTAL FILLED WEIGHT	6,898 lbs (3,129 kg)
AVERAGE SPA VOLUME	540 US gal (2,044 liters)
JET PUMPS	
NORTH AMERICA (60 Hz)	3 TheraMax™ 2.5 hp (5.1 bhp ²)
EXPORT (50 Hz)	3 TheraMax™ 2.0 hp (2.6 bhp ²)
TOTAL JETS	65 + 6 Air Injector Jets
AIR BLOWER	1.5 hp air pump
MASSAGE VARIETY	9

WATER SYSTEM	MicroClean® Ultra Filtration System
LIGHTING	Integrated
ELECTRICAL REQUIREMENTS*	
NORTH AMERICA (60 Hz)	240 VAC @ 50A or 60A
EXPORT (50 Hz)	230 VAC @ 24A, 26A
TITANIUM COIL HEATER	5.5 kW

Estimated Monthly Cost **\$18.79** w/ EcoWrap® **\$15.48**



Optima® Seats 6-7

75" x 75" x 37.5" (226 cm x 226 cm x 96 cm)

880™ series

DRY WEIGHT	924 lbs (419 kg)
TOTAL FILLED WEIGHT	5,344 lbs (2,424 kg)
AVERAGE SPA VOLUME	410 US gal (1,552 liters)
JET PUMPS	
NORTH AMERICA (60 Hz)	2 TheraMax™ 2.5 hp (5.1 bhp ²)
EXPORT (50 Hz)	2 TheraMax™ 2.0 hp (2.6 bhp ²)
TOTAL JETS	47 + 14 Air Injector Jets
AIR BLOWER	1.5 hp air pump
MASSAGE VARIETY	8

WATER SYSTEM	MicroClean® Ultra Filtration System
LIGHTING	Integrated
ELECTRICAL REQUIREMENTS*	
NORTH AMERICA (60 Hz)	240 VAC @ 40A, 50A or 60A
EXPORT (50 Hz)	230 VAC @ 17A, 15A
TITANIUM COIL HEATER	5.5 kW ¹

Estimated Monthly Cost **\$14.54** w/ EcoWrap® **\$11.45**

¹ 2.7 KW on 50 Hz export spas.

² Brake horsepower (bhp) is a maximum value measured by the motor manufacturer with no pump installed.

*See manual for additional configurations.



Chelsea® Seats 6-7

75" x 75" x 36" (226 cm x 226 cm x 92 cm)

780™ series

DRY WEIGHT	873 lbs (396 kg)
TOTAL FILLED WEIGHT	5,210 lbs (2,363 kg)
AVERAGE SPA VOLUME	400 US gal (1,514 liters)
TOTAL JETS	40
MASSAGE VARIETY	6

WATER SYSTEM	MicroClean® Filtration System Enhanced
JET PUMPS	
NORTH AMERICA (60 Hz)	2 TheraMax™ 2.5 cont hp (5.1 bhp ²)
EXPORT (50 Hz)	2 TheraMax™ 2.0 cont hp (2.6 bhp ²)
ELECTRICAL REQUIREMENTS*	
NORTH AMERICA (60 Hz)	240 VAC @ 40A, 50A or 60A
EXPORT (50 Hz)	230-240 VAC @ 20A, 30A or 40A
STAINLESS STEEL HEATER	5.5 kW ¹

Estimated Monthly Cost **\$16.92** w/ EcoWrap® **\$12.96**



McKinley® Seats 6-7

75" x 75" x 36" (226 cm x 226 cm x 92 cm)

680™ series

DRY WEIGHT	778 lbs (353 kg)
TOTAL FILLED WEIGHT	5,115 lbs (2,320 kg)
AVERAGE SPA VOLUME	410 US gal (1,552 liters)
TOTAL JETS	42

WATER SYSTEM	MicroClean® Mini Filtration System Classic
JET PUMPS	
NORTH AMERICA (60 Hz)	2-speed 2.5 hp (4.5 bhp ²) 1-speed 2.5 hp (4.8 bhp ²)
EXPORT (50 Hz)	2-speed 2.0 hp (2.6 bhp ²) 1-speed 2.0 hp (3.0 bhp ²)
ELECTRICAL REQUIREMENTS*	
NORTH AMERICA (60 Hz)	240 VAC @ 40A, 50A or 60A
EXPORT (50 Hz)	230 VAC @ 20A, 30A or 40A
STAINLESS STEEL HEATER	5.5 kW ¹

Estimated Monthly Cost **TBD**



Edison® Seats 6

7' x 7' x 36" (214 cm x 214 cm x 92 cm)

680™ series

DRY WEIGHT	758 lbs (344 kg)
TOTAL FILLED WEIGHT	4,511 lbs (2,046 kg)
AVERAGE SPA VOLUME	350 US gal (1,325 liters)
TOTAL JETS	36

WATER SYSTEM	MicroClean® Mini Filtration System Classic
JET PUMPS	
NORTH AMERICA (60 Hz)	2-speed 2.5 hp (4.5 bhp ²) 1-speed 2.5 hp (4.8 bhp ²)
EXPORT (50 Hz)	2-speed 2.0 hp (2.6 bhp ²) 1-speed 2.0 hp (3.0 bhp ²)
ELECTRICAL REQUIREMENTS*	
NORTH AMERICA (60 Hz)	240 VAC @ 40A, 50A or 60A
EXPORT (50 Hz)	230 VAC @ 20A, 30A or 40A
STAINLESS STEEL HEATER	5.5 kW ¹

Estimated Monthly Cost **TBD**

¹ 2.7 KW on 50 Hz export spas.

² Brake horsepower (bhp) is a maximum value measured by the motor manufacturer with no pump installed.

*See manual for additional configurations.



Seats 5-6



Cameo[®]
Seats 5-6

7'5" x 7'5" x 37.5" (226 cm x 226 cm x 96 cm)



880[™]
series



DRY WEIGHT	962 lbs (436 kg)
TOTAL FILLED WEIGHT	4,882 lbs (2,214 kg)
AVERAGE SPA VOLUME	370 US gal (1,401 liters)
JET PUMPS	
NORTH AMERICA (60 Hz)	2 TheraMax [™] 2.5 hp (5.1 bhp ²)
EXPORT (50 Hz)	2 TheraMax [™] 2.0 hp (2.6 bhp ²)
TOTAL JETS	54 + 6 Air Injector Jets
AIR BLOWER	1.5 hp air pump
MASSAGE VARIETY	10

WATER SYSTEM	MicroClean [®] Ultra Filtration System
LIGHTING	Integrated
ELECTRICAL REQUIREMENTS¹	
NORTH AMERICA (60 Hz)	240 VAC @ 40A, 50A or 60A
EXPORT (50 Hz)	230 VAC @ 17A, 15A
TITANIUM COIL HEATER	5.5 kW ¹

Estimated Monthly Cost	\$14.04	w/ EcoWrap [®]	\$11.38
-------------------------------	----------------	-------------------------	----------------



Altamar[®]
Seats 5-6

6'9" x 7'2" x 37.5" (206 cm x 219 cm x 96 cm)



880[™]
series



DRY WEIGHT	875 lbs (397 kg)
TOTAL FILLED WEIGHT	4,878 lbs (2,213 kg)
AVERAGE SPA VOLUME	390 US gal (1,476 liters)
JET PUMPS	
NORTH AMERICA (60 Hz)	2 TheraMax [™] 2.5 hp (5.1 bhp ²)
EXPORT (50 Hz)	2 TheraMax [™] 2.0 hp (2.6 bhp ²)
TOTAL JETS	41 + 8 Air Injector Jets
AIR BLOWER	1.5 hp air pump
MASSAGE VARIETY	9

WATER SYSTEM	MicroClean [®] Ultra Filtration System
LIGHTING	Integrated
ELECTRICAL REQUIREMENTS¹	
NORTH AMERICA (60 Hz)	240 VAC @ 40A, 50A or 60A
EXPORT (50 Hz)	230 VAC @ 17A, 15A
TITANIUM COIL HEATER	5.5 kW ¹

Estimated Monthly Cost	\$13.68	w/ EcoWrap [®]	\$11.02
-------------------------------	----------------	-------------------------	----------------



Hamilton[™]
Seats 5-6

7'5" x 7'5" x 36" (226 cm x 226 cm x 92 cm)



780[™]
series



DRY WEIGHT	826 lbs (375 kg)
TOTAL FILLED WEIGHT	4,996 lbs (2,266 kg)
AVERAGE SPA VOLUME	393 US gal (1,488 liters)
TOTAL JETS	41
MASSAGE VARIETY	6

WATER SYSTEM	MicroClean [®] Filtration System
LIGHTING	Enhanced
JET PUMPS	
NORTH AMERICA (60 Hz)	2 TheraMax [™] 2.5 cont hp (5.1 bhp ²)
EXPORT (50 Hz)	2 TheraMax [™] 2.0 cont hp (2.6 bhp ²)
ELECTRICAL REQUIREMENTS¹	
NORTH AMERICA (60 Hz)	240 VAC @ 40A, 50A or 60A
EXPORT (50 Hz)	230-240 VAC @ 20A, 30A or 40A
STAINLESS STEEL HEATER	5.5 kW ¹

Estimated Monthly Cost	\$14.04	w/ EcoWrap [®]	\$12.96
-------------------------------	----------------	-------------------------	----------------

¹ 2.7 KW on 50 Hz export spas.

² Brake horsepower (bhp) is a maximum value measured by the motor manufacturer with no pump installed.

^{*} See manual for additional configurations.

Seats 5-6



Bristol[™]
Seats 5

7' x 7' x 36" (213 cm x 213 cm x 91 cm)



780[™]
series



DRY WEIGHT	745 lbs (338 kg)
TOTAL FILLED WEIGHT	4,331 lbs (1,965 kg)
AVERAGE SPA VOLUME	350 US gal (1,325 liters)
TOTAL JETS	38
MASSAGE VARIETY	6

WATER SYSTEM	MicroClean [®] Filtration System
LIGHTING	Enhanced
JET PUMPS	
NORTH AMERICA (60 Hz)	2 TheraMax [™] 2.5 cont hp (5.1 bhp ²)
EXPORT (50 Hz)	2 TheraMax [™] 2.0 cont hp (2.6 bhp ²)
ELECTRICAL REQUIREMENTS¹	
NORTH AMERICA (60 Hz)	240 VAC @ 40A, 50A or 60A
EXPORT (50 Hz)	230-240 VAC @ 20A, 30A or 40A
STAINLESS STEEL HEATER	5.5 kW ¹

Estimated Monthly Cost	\$13.18	w/ EcoWrap [®]	\$10.80
-------------------------------	----------------	-------------------------	----------------



Ramona[®]
Seats 5-6

7'5" x 7'5" x 36" (226 cm x 226 cm x 92 cm)



680[™]
series



DRY WEIGHT	734 lbs (333 kg)
TOTAL FILLED WEIGHT	5,071 lbs (2,300 kg)
AVERAGE SPA VOLUME	410 US Gal (1,552 Liters)
TOTAL JETS	39

WATER SYSTEM	MicroClean [®] Mini Filtration System
LIGHTING	Classic
JET PUMPS	
NORTH AMERICA (60 Hz)	2-speed 2.5hp (4.5 bhp ²) 1-speed 2.5hp (4.8 bhp ²)
EXPORT (50 Hz)	2-speed 2.0hp (2.6 bhp ²) 1-speed 2.0hp (3.0 bhp ²)
ELECTRICAL REQUIREMENTS¹	
NORTH AMERICA (60 Hz)	240 VAC @ 40A, 50A, or 60A
EXPORT (50 Hz)	230 VAC @ 20A, 30A, or 40A
STAINLESS STEEL HEATER	5.5 kW ¹

Estimated Monthly Cost	TBD
-------------------------------	------------



Peyton[™]
Seats 5-6

7' x 7' x 36" (214 cm x 214 cm x 92 cm)



680[™]
series



DRY WEIGHT	654 lbs (297 kg)
TOTAL FILLED WEIGHT	4,490 lbs (2,037 kg)
AVERAGE SPA VOLUME	340 US gal (1,287 liters)
TOTAL JETS	34

WATER SYSTEM	MicroClean [®] Mini Filtration System
LIGHTING	Classic
JET PUMPS	
NORTH AMERICA (60 Hz)	2-speed 2.5hp (4.5 bhp ²) 1-speed 2.5hp (4.8 bhp ²)
EXPORT (50 Hz)	2-speed 2.0hp (2.6 bhp ²) 1-speed 2.0hp (3.0 bhp ²)
ELECTRICAL REQUIREMENTS¹	
NORTH AMERICA (60 Hz)	240 VAC @ 40A, 50A, or 60A
EXPORT (50 Hz)	230 VAC @ 20A, 30A, or 40A
STAINLESS STEEL HEATER	5.5 kW ¹

Estimated Monthly Cost	TBD
-------------------------------	------------

¹ 2.7 KW on 50 Hz export spas.

² Brake horsepower (bhp) is a maximum value measured by the motor manufacturer with no pump installed.

^{*} See manual for additional configurations.

Seats 4-5

Seats 2-3



Marin®
Seats 4-5

6'4" x 7'7" x 34" (193 cm x 231 cm x 86 cm)



880™
series



DRY WEIGHT	803 lbs (364 kg)
TOTAL FILLED WEIGHT	4,222 lbs (1,915 kg)
AVERAGE SPA VOLUME	320 US gal (1,211 liters)
TOTAL JETS	45 + 4 Air Injector Jets
MASSAGE VARIETY	9

	Estimated Monthly Cost	w/ EcoWrap®
	\$12.96	\$9.79

WATER SYSTEM	MicroClean® Ultra Filtration System
LIGHTING	Integrated
AIR BLOWER	1.5 hp air pump
JET PUMPS	
NORTH AMERICA (60 Hz)	2 TheraMax™ 2.5 hp (5.1 bhp ²)
EXPORT (50 Hz)	2 TheraMax™ 2.0 hp (2.6 bhp ²)
ELECTRICAL REQUIREMENTS*	
NORTH AMERICA (60 Hz)	240 VAC @ 40A, or 50A
EXPORT (50 Hz)	230 VAC @ 10A, 15A
TITANIUM COIL HEATER	5.5 kW ¹



Montclair™
Seats 4-5

6'3" x 7'7" x 33.5" (191 cm x 231 cm x 85 cm)



780™
series



DRY WEIGHT	790 lbs (358 kg)
TOTAL FILLED WEIGHT	4,251 lbs (1,928 kg)
AVERAGE SPA VOLUME	310 US gal (1,173 liters)
TOTAL JETS	30
MASSAGE VARIETY	6

	Estimated Monthly Cost	w/ EcoWrap®
	\$14.62	\$11.09

WATER SYSTEM	MicroClean® Filtration System
LIGHTING	Enhanced
JET PUMPS	
NORTH AMERICA (60 Hz)	2 TheraMax™ 2.5 cont hp (5.1 bhp ²)
EXPORT (50 Hz)	2 TheraMax™ 2.0 cont hp (2.6 bhp ²)
ELECTRICAL REQUIREMENTS*	
NORTH AMERICA (60 Hz)	240 VAC @ 40A, 50A or 60A
EXPORT (50 Hz)	230-240 VAC @ 20A, 30A or 40A
STAINLESS STEEL HEATER	5.5 kW ¹



Prado®
Seats 4-5

6'8" x 6'8" x 33" (203 cm x 203 cm x 84 cm)

680™
series



DRY WEIGHT	562 lbs (255 kg)
TOTAL FILLED WEIGHT	4,219 lbs (1,914 kg)
AVERAGE SPA VOLUME	354 US gal (1,340 liters)
TOTAL JETS	26

	Estimated Monthly Cost
	TBD

WATER SYSTEM	MicroClean® Mini Filtration System
LIGHTING	Classic
JET PUMPS	
NORTH AMERICA (60 Hz)	1 TheraFlo™ 1.5 cont hp (1 @ 2 spd, 2.5 bhp ²)
EXPORT (50 Hz)	1 TheraFlo™ 2.0 cont hp (2 spd 3.0 bhp ²)
ELECTRICAL REQUIREMENTS*	
NORTH AMERICA (60 Hz)	120 VAC @ 15A or 240 VAC @ 30A or 40A
EXPORT (50 Hz)	230 VAC @ 20A or 30A
STAINLESS STEEL HEATER	1.0 kW ¹ (120V) or 4.0 kW (240V)



Capri®
Seats 2-3

5'9" x 6'10" x 30.5" (175 cm x 208 cm x 77 cm)

880™
series



DRY WEIGHT	635 lbs (288 kg)
TOTAL FILLED WEIGHT	3,262 lbs (1,480 kg)
AVERAGE SPA VOLUME	230 US gal (909 liters)
TOTAL JETS	31 + 8 Air Injector Jets
MASSAGE VARIETY	9

	Estimated Monthly Cost	w/ EcoWrap®
	\$10.80	\$8.86

WATER SYSTEM	MicroClean® Ultra Filtration System
LIGHTING	Integrated
AIR BLOWER	1.5 hp air pump
JET PUMPS	
NORTH AMERICA (60 Hz)	1 TheraMax™ 2.5 hp (5.1 bhp ²)
EXPORT (50 Hz)	1 TheraMax™ 2.0 hp (2.6 bhp ²)
ELECTRICAL REQUIREMENTS*	
NORTH AMERICA (60 Hz)	240 VAC @ 40A, or 50A
EXPORT (50 Hz)	230 VAC @ 10A, 15A
TITANIUM COIL HEATER	5.5 kW ¹



Dover™
Seats 2-3

5'9" x 6'10" x 30.5" (175 cm x 208 cm x 77 cm)

780™
series



DRY WEIGHT	620 lbs (281 kg)
TOTAL FILLED WEIGHT	3,247 lbs (1,473 kg)
AVERAGE SPA VOLUME	230 US gal (871 liters)
TOTAL JETS	23
MASSAGE VARIETY	5

	Estimated Monthly Cost	w/ EcoWrap®
	\$12.74	\$10.22

WATER SYSTEM	MicroClean® Filtration System
LIGHTING	Enhanced
JET PUMPS	
NORTH AMERICA (60 Hz)	1 TheraMax™ 1.5 cont hp (2 spd, 4.8 bhp ²)
EXPORT (50 Hz)	1 TheraMax™ 2.0 cont hp (2 spd 3.0 bhp ²)
ELECTRICAL REQUIREMENTS*	
NORTH AMERICA (60 Hz)	120 VAC @ 15A or 240 VAC @ 30A, or 40A
EXPORT (50 Hz)	230 VAC @ 20A, or 30A
STAINLESS STEEL HEATER	1.0 kW ¹ (120V) or 4.0 kW (240V)



Alicia™
Seats 2-3

6'8" x 5'9" x 33" (203 cm x 175 cm x 84 cm)

680™
series



DRY WEIGHT	492 lbs (223 kg)
TOTAL FILLED WEIGHT	2,780 lbs (1,261 kg)
AVERAGE SPA VOLUME	220 gallons (833 liters)
TOTAL JETS	21

	Estimated Monthly Cost
	TBD

WATER SYSTEM	MicroClean® Mini Filtration System
LIGHTING	Classic
JET PUMPS	
NORTH AMERICA (60 Hz)	1 TheraFlo™ 1.5 cont hp (1 @ 2 spd, 2.5 bhp ²)
EXPORT (50 Hz)	1 TheraFlo™ 2.0 cont hp (2 spd 3.0 bhp ²)
ELECTRICAL REQUIREMENTS*	
NORTH AMERICA (60 Hz)	120 VAC @ 15A or 240 VAC @ 30A or 40A
EXPORT (50 Hz)	230 VAC @ 20A or 30A
STAINLESS STEEL HEATER	1.0 kW ¹ (120V) or 4.0 kW (240V)

¹ 2.7 KW on 50 Hz export spas.

² Brake horsepower (bhp) is a maximum value measured by the motor manufacturer with no pump installed.

*See manual for additional configurations.

¹ 2.7 KW on 50 Hz export spas.

² Brake horsepower (bhp) is a maximum value measured by the motor manufacturer with no pump installed.

*See manual for additional configurations.

Color Palette

Whether you're charmed by soothing shades or bold hues, selecting the perfect color combination starts with a pleasing palette that blends seamlessly with your backyard décor.

Covers

SunStrong® Covers



25% lighter for easier handling and an added premium touch to your outdoor décor. Standard on 880™, 780™ and 680™ Series spas

Feature

- 25% lighter
- Water resistant
- Superior UV resistance properties

Foam Density

1.5 lbs.

Material

SunStrong® Outdoor all-weather fabric

Taper



4 in. - 2.25 in.

Finish

Double stitched outdoor thread made from strong UV resistant fibers

SunStrong® Extreme Covers



Premium outdoor covers. Designed for cold harsh climates. Standard on 980™ Series spas. Optional upgrade on 880™, 780™ and 680™ Series spas.

- Dense foam supports heavy snow loads
- Angled to promote run-off
- Water and stain resistant to provide a simple wipe clean surface
- Superior UV resistance properties

2 lbs.

SunStrong® Outdoor all-weather fabric



5 in. - 3 in.

Double stitched outdoor thread made from strong UV resistant fibers



Gray*



Sienna*



Black

Acrylic Shells



Porcelain



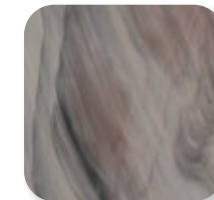
Platinum



Midnight



Celestite



Monaco

Cabinetry

980™ Series Exclusives

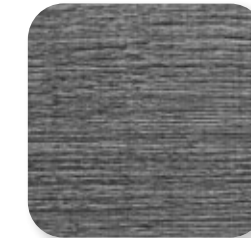


Coastal



Mahogany

SunSide® 880™ Series



Vintage Oak



Modern Hardwood

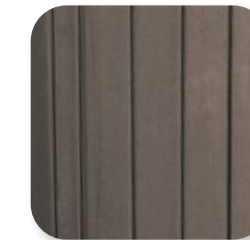


Brushed Gray

SunStrong® 780™ Series



Autumn Walnut*



Coastal



Mahogany

680™ Series Exclusives



Slate



Graphite

*See dealer for cover and umbrella color options

Note: Colors, features and options subject to change without notice and color options vary by model. See dealer for details.
*Not available on 680™ Series

Genuine Parts & Accessories



Engineered specifically to optimize your experience, Sundance® Genuine Parts and Accessories prolong the enjoyment of your spa, letting you focus on the way you and your family feel when you use your Sundance® spa.



Pillows

Created to purposefully pose the body in a relaxing position to maximize the benefits of hydrotherapy, Sundance® Spas headrests and replacement pillow sets are an easy way to quickly update your spa.



Cover Lifts

The hydraulic cover lift incorporates a gas-assisted lift and a sleek, durable aluminum frame to make moving and storing your spa cover effortless.

The manual cover lift is engineered from a sleek, durable aluminum frame and makes it easier to move and store your spa cover.



Steps

Modern, modular design now with softer contoured edges. Aluminum frame with improved powder coating process to avoid chipping and discoloration.





Sundance® Spas

Sundance Spas, Inc.
14525 Monte Vista Ave., Chino, CA 91710
800-883-7727

www.SundanceSpas.com 6890-043K 01/23

©2023 Sundance Spas, Inc. All rights reserved.
Sundance® is a registered trademark of Sundance Spas, Inc. All other brands, product names, company names, trade names and trademarks used are the property of their respective owners. Sundance may add to change or remove any part of these materials at any time, without notice. Reproduction in whole or in part without written permission is prohibited. International products may be configured differently to meet local electrical requirements. Dimensions are approximate.

Printed in the United States.



MIX
Paper from
responsible sources
FSC® C103525

